

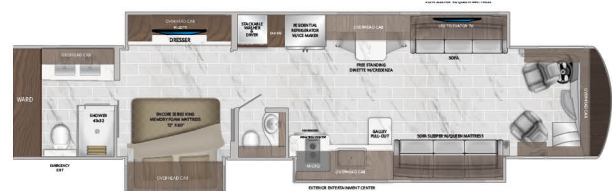
42Q | 45A | 45D | 45P

COMPREHENSIVE FEATURES

- Liberty Bridge® Integrated Freightliner® Custom Chassis XCM
- Freightliner® BrakeSync Standard
- 20k lb. Front Axle with 365 Tires (45A, 45D, 45P)
- Forward Fuel Tank - 150 gal
- FCCC® Chassis XCM (42Q) SL (45A, 45D, 45P)
- Cummins Diesel Engine (450HP - 605HP)
- Select Drive™ Premium Steering System
- Dual Coat Painted Steel Platform **NEW FOR MY26**
- 12.5kW Onan QD Generator with AGS
- 2,800w Pure Sine Wave Inverter
- Added exterior light strips to rear engine grille & behind rear upper spoiler **NEW FOR MY26**
- Added Stainless steel to surface of power entry step **NEW FOR MY26**
- Water Pump - Upgrade 5.3GPM REBEL **NEW FOR MY26**
- Dual Dash Monitors to One Large 20" Single Monitor **NEW FOR MY26**
- Safety - 360 Camera STANDARD
- Luggage Doors
 - Powered push button locks for extra convenience & added lock/unlock button on exterior grab bar
- Basement Slide Trays (2) Increased Size by 25% Per Tray
 - Manual Trays STANDARD, Power Trays OPTION
 - ALL NEW Stow N Go storage compartments OPTION
- Aqua-Hot 450D for Unlimited Hot Water and Comfortable Even Interior Heat
- Electrical & Battery Compartment Redesign
 - Improved functionality by fully enclosing batteries, creating storage area in bay
 - Lithium GC3 Batteries (3) 270Ah each OPTION
- Service Station/Wet Bay Redesign
 - Improved functionality and streamlined look with control panel on luggage door for easy access & powered knife valves
- Fisher & Paykel 240V 3400W Cooktop with Added 50 amp Sub Panel **NEW FOR MY26**
- Freezer/Cooler
 - Rotated Orientation, to Extend Past Slideout Box **NEW FOR MY26**
- Sani Con Turbo 600S Waste Management System
- Shurflo Accumulator Tank-in-line Water Pressure Tank Bladder
- Increased soundproofing in cockpit
 - Additional insulating/soundproofing materials applied in front cap, dash, driver footwell, entry step well and improved entry door sealing
- APEX® Custom Residential Furniture Designs
- Quartz Countertops by Cambria Throughout
- Upgraded Blanco Anthracite Galley Sink **NEW FOR MY26**
- **Platinum Experience Warranty** includes - 2yr / 24k mile coach, 5yr / 50k structural, 3 years REV assist roadside assistance, dedicated customer service team and now includes the PX owner's mobile app.
- **FCCC® RoadWatch** state-of-the-art driving and safety system includes automatic traction control, electronic stability control with roll stability support, adaptive cruise control, and collision mitigation with forward warning and active braking.
- **UltraSteer** tag axle reduces turning by 17' compared to a fixed tag axle or 8' tighter than the competitions passive steer tag.
- **HWH** pump and manifold relocated for improved performance, enhanced weight distribution, and increased storage.



42Q



45A



45D

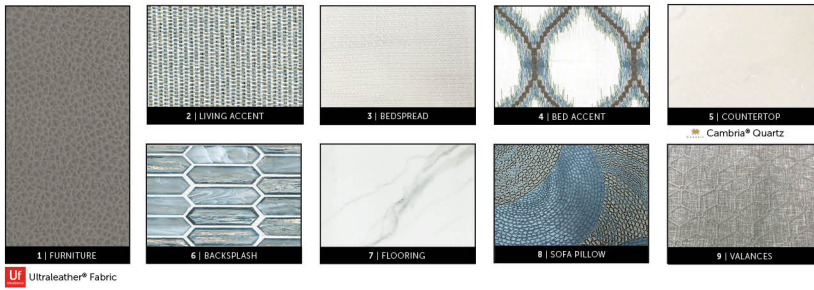


45P

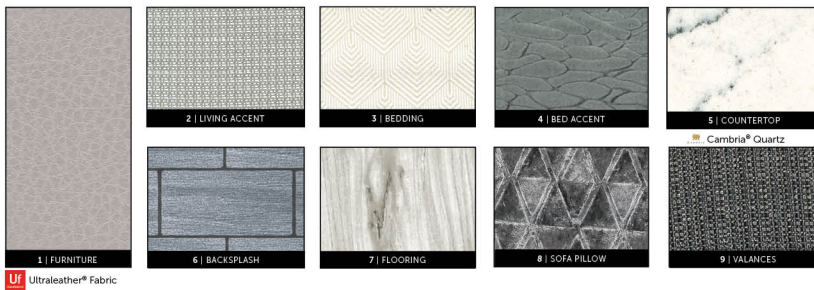
AVAILABLE OPTIONS

- Starlink Satellite System
- Roof Mounted Awning (2nd Door Side)
- 43" Front Overhead LED TV
- Standard Cabinet w/o Dishwasher
- Co-Pilot Monitor with 7" Screen
- Lithium Battery Package
- Sofa Bed w/Mattress (42Q Twin Mattress, 45A Queen Mattress)
- Motion Power Lounge (42Q, 45A)
- Dual Recliners (45D, 45P)
- Booth Dinette (45A)
- Exterior Freezer
- Exterior Storage Stow N Go (2) (42' = 4.0ft3, 45' = 4.8ft3)
- Opt. 467- Interior Hardware- Matte Black
- Additional Exterior Graphics
- Opt. 710- Blackout Package
- Technology Package: Wifi Ranger™ Denali-LTE w/router, Cell Booster, 330W Solar Panel, JBL Premium Audio Sound System

RENDEZVOUS DÉCOR



ROCKPORT DÉCOR



SAND CREEK DÉCOR



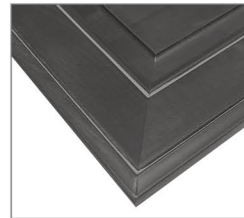
HARDWOOD CABINETY

TRADITIONAL DOOR PROFILE

RUSHMORE
PAINTED CABINETY

CHELSEA

UPDATED WOOD COLOR



IMPERIAL

UPDATED WOOD COLOR



HAZELNUT

NEW WOOD COLOR

CHASSIS

MODEL	42Q	45A	45D	45P
Wheelbase	30' 2"	319"	319"	319"
Front GAWR (lbs)	17,000	20,000	20,000	20,000
Rear GAWR (lbs)	20,000	20,000	20,000	20,000
Tag GAWR (lbs)	10,000	14,000	14,000	14,000
GCWR (lbs)	62,000	74,000	74,000	74,000
Hitch Rating Weight (lbs)	15,000	20,000	20,000	20,000
Tongue Weight (lbs)	1,500	2,000	2,000	2,000
Fuel Capacity (gal)	150	150	150	150

LIBERTY BRIDGE® (42Q)

Model: Freightliner Custom Chassis® XCM
 Engine: Cummins® L9
 Horsepower: 450HP
 Torque: 1,250 lb. ft
 Transmission: Allison® 3000 MH 6-Speed
 w/ Electronic Shift Control
 Alternator: 170 Amp

LIBERTY BRIDGE® (45A, 45D, 45P)

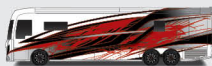
Model: Freightliner Custom Chassis® SL
 Engine: Cummins® X15
 Horsepower: 605HP
 Torque: 1,950 lb. ft
 Transmission: Allison® 4000 MH 6-Speed/
 Electronic Shift Control
 Alternator: 240 Amp

DIMENSIONS & CAPACITIES

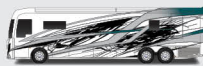
MODEL	42Q	45A	45D	45P
Overall Length	42' 11"	44' 11"	44' 11"	44' 11"
Overall Height	13' 1"	13' 1"	13' 1"	13' 1"
Overall Width*	102"	102"	102"	102"
Interior Height*	84"	84"	84"	84"
Interior Width*	96"	96"	96"	96"
Patio Awning Width	18'	19' 8"	19' 8"	19' 8"
Interior Storage (cu. ft.)	233	212	212	212
Exterior Storage (cu. ft.)	131	150	150	150
Fresh Water Capacity (gal)	100	105	105	105
Grey Water Capacity (gal)	70	70	70	70
Black Water Capacity (gal)	50	50	50	50

*Overall Width, interior height and width measured with slide-box in.

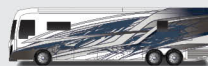
EXTERIORS



CANYON



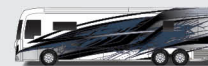
CELEBRATION



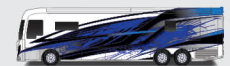
CONSTITUTION



FLIGHT



FREEDOM



JUSTICE



LIBERTY



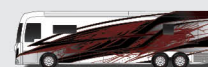
MONTPELIER



MYSTIQUE



PATRIOT



VERMILION



VIPER