



A M E R I C A N E A G L E

The romance of life on the road.

T W O T H O U S A N D



American Coach

THE ROAD BECKONS.
AMERICA CALLS.

Fleetwood Motorhomes of Indiana, Inc. • Plant #44 • 1031 U.S. 224 East • Decatur, Indiana 46733-5006 • (219) 728-2121 (800) 648-6582

PLEASE READ: Product information and photography in this brochure were as accurate as possible at the time of publication. Subsequent refinements may be evident in the actual product. Prices and specifications are subject to change without notice. Selected decorator items shown in the photographs are not part of the product unless specified. All liquid capacities, dimensions, and weights are nominal. Warranty valid only on product sold in the U.S.A. and Canada.

BY **FLEETWOOD**

STANDARD FEATURES

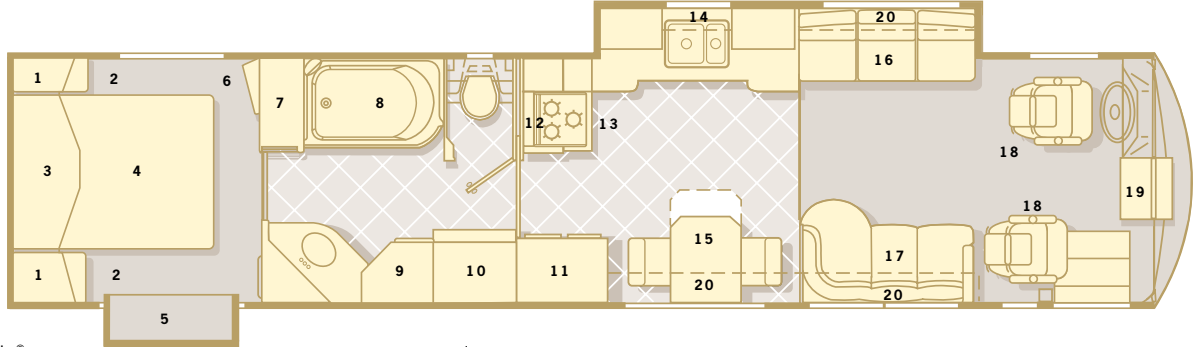
- 1) Shirt Ward
- 2) Nightstand
- 3) Rear Overhead Storage
- 4) Offset Queen Bed 60" x 80"
- 5) Wardrobe Slide-Out
- 6) 20" Rear TV
- 7) Storage Drawers
- 8) Shower/Tub
- 9) Wardrobe
- 10) Washer/Dryer
- 11) Side-By-Side Refer w/Ice Maker
- 12) Microwave
- 13) Cooktop
- 14) Galley Overhead
- 15) Corian® Table w/Villa® Fabric Chairs
- 16) Villa® Fabric Sleeper Sofa
- 17) Villa® Fabric J-Love Seat
- 18) Villa® Leather 6-Way Power Driver/Passenger Seats
- 19) 20" Front TV
- 20) Overhead Storage

Galley Options

- Recessed Cooktop
- Norcold® 4-Door Refer w/Ice Maker
- Facing Dinette w/Corian® Table

Cockpit Options

- Villa® Leather 6-Way Power Driver Seat & Buddy Seat w/Power Lumbar & Power Footrest
- Villa® Leather 6-Way Power Driver/Passenger Seats w/Power Lumbar



Bath Options

- Shower w/Seat & Linen
- Enlarged Water Closet w/Sink

Living Area Options

- Villa® Leather Sleeper Sofa
- Villa® Leather J-Love Seat
- Villa® Leather Sleeper Sofa/Wraparound Dinette/J-Love Seat
- Villa® Leather Recliner w/Corian® Inlay Desk/Sleeper Sofa
- Villa® Leather Recliner w/Laptop Computer Desk/Sleeper Sofa

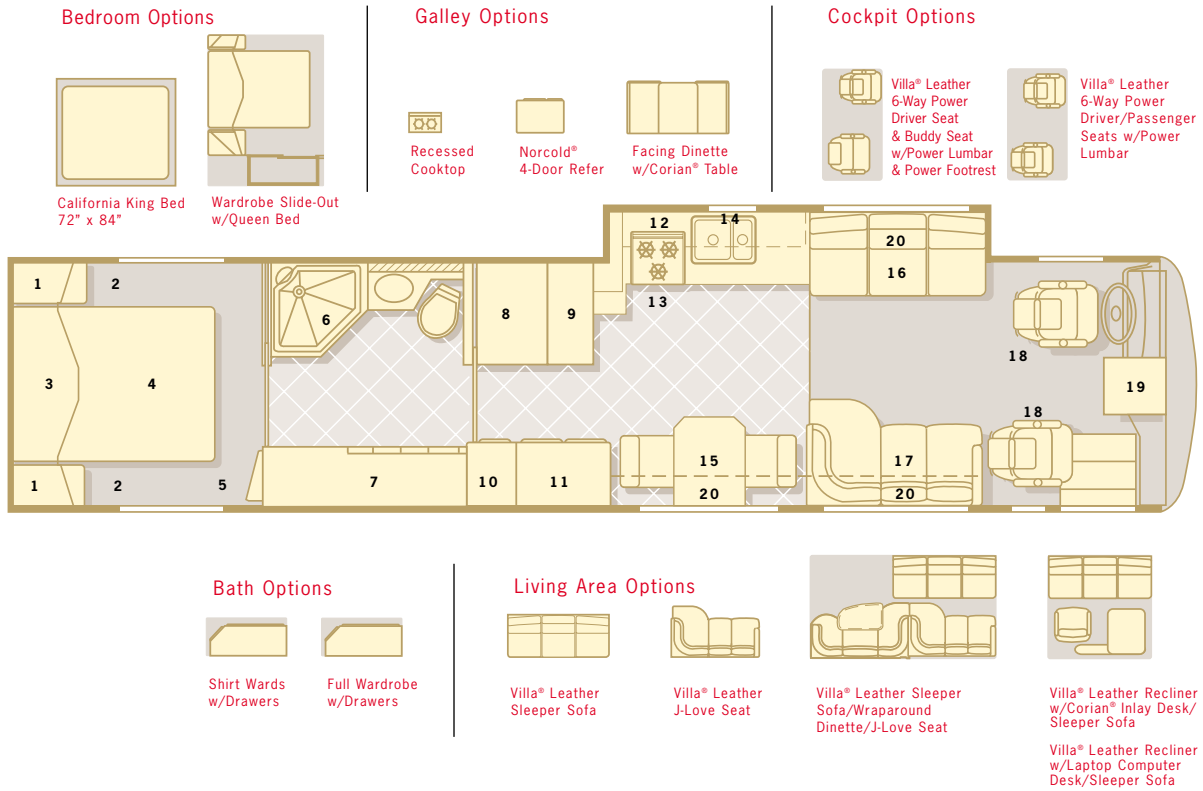
MODEL 40 EDS

EAGLE SPECIFICATIONS

WEIGHTS (POUNDS)	40 EDS			TANK & LIQUID CAPACITIES (GALLONS)		
	40 EDS	40 ENS	40 EVS	40 EDS	40 ENS	40 EVS
GVWR (Note #1)	32,000	32,000	32,000	Grey Water Tank	60	60
GCWR (Note #2)	42,000	42,000	42,000	(Waste) Black Water Tank	40	40
GAWR (front)	12,000	12,000	12,000	Fresh Water Tank	100	100
GAWR (rear)	20,000	20,000	20,000	L.P. Tank (Note #5)	40.3	40.3
UVW (Note #3)	27,400	27,400	27,800	Water Heater	10	10
				Fuel Tank w/Dual Side Fills	150	150

MEASUREMENTS	40 EDS			CHASSIS	Spartan® Mountain Master GT Stacked Rail
	40 EDS	40 ENS	40 EVS		
Wheelbase	266"	266"	266"	Engine	Cummins® C.8.3L/350 hp ISC
Overall Length (Note #4)	40' 1-1/2"	40' 1-1/2"	40' 1-1/2"	Torque	1050 @ 1400 RPM
Overall Height w/AC	12'	12'	12'	Cubic Inch	504.5
Interior Height (max.)	79"	79"	79"	Transmission	Allison® MD-3066, 6-Speed World w/Electronic Shifter
Interior Width (max.)	96"	96"	96"	Alternator Amps	160 Amp Leece Neville
Exterior Width (max.)	102"	102"	102"	Tires	G159 22.5" Low Profile Highway Radial

Note #1: Gross Vehicle Weight Rating (GVWR) means the maximum permissible loaded weight of the motorhome.
 Note #2: Gross Combined Weight Rating (GCWR) means the value specified by the motorhome manufacturer as the maximum allowable loaded weight of the motorhome with its towed trailer or towed vehicle. Towing and braking capacities may differ. Refer to Fleetwood and chassis manufacturer manuals for complete information.
 Note #3: Unloaded Vehicle Weight (UVW) means the weight of a vehicle, without options, with maximum capacity of all fluids necessary for operation of the vehicle, but without cargo, occupants or accessories that are ordinarily removed from the vehicle when it is not in use. Weight varies significantly based on options.
 Note #4: Overall lengths taken from front bumper to rear bumper.
 Note #5: Capacities shown are tank manufacturer's listed Water Capacity (WC). Actual filled LP Capacity is 80% of listing due to safety shut-off required on tank.



MODEL 40ENS

STANDARD FEATURES

- 1) Shirt Ward
- 2) Nightstand
- 3) Rear Overhead Storage
- 4) Queen Bed 60" x 80"
- 5) 20" Rear TV
- 6) Shower
- 7) Wardrobe
- 8) Pantry/Washer/Dryer
- 9) Pullout Pantry/Hamper Below
- 10) Cedar Closet/Ice Maker Below
- 11) Side-by-Side Refer
- 12) Microwave
- 13) Cooktop
- 14) Galley Overhead
- 15) Corian® Table w/Villa® Fabric Chairs
- 16) Villa® Fabric Sleeper Sofa
- 17) Villa® Fabric J-Love Seat
- 18) Villa® Leather 6-Way Power Driver/Passenger Seats
- 19) 20" Front TV
- 20) Overhead Storage

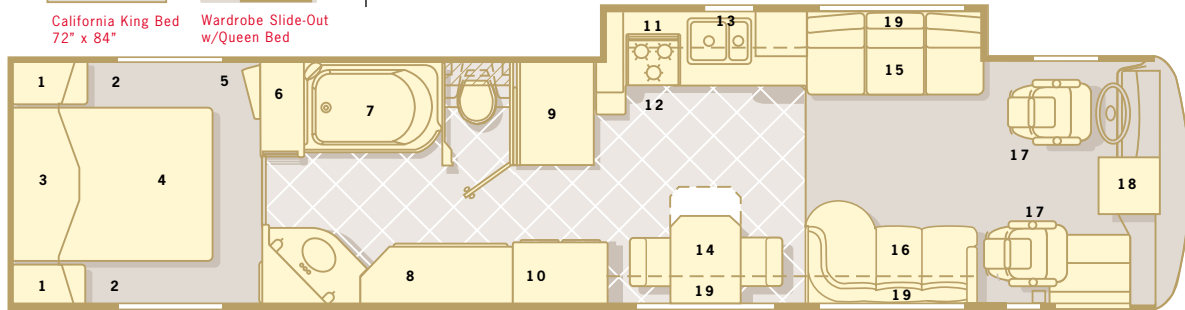
Bedroom Options



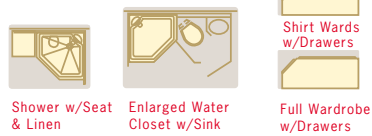
Galley Options



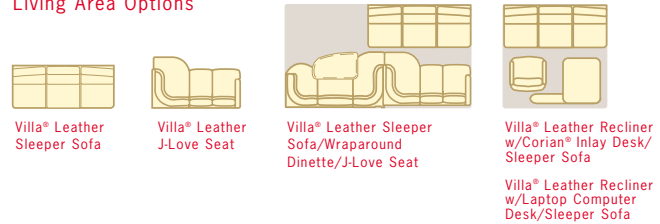
Cockpit Options



Bath Options



Living Area Options



MODEL 40EVS

STANDARD FEATURES

- 1) Shirt Ward
- 2) Nightstand
- 3) Rear Overhead Storage
- 4) Queen Bed 60" x 80"
- 5) 20" Rear TV
- 6) Storage Drawers
- 7) Shower/Tub
- 8) Wardrobe
- 9) Washer/Dryer
- 10) Side-by-Side Refer w/Ice Maker
- 11) Microwave
- 12) Cooktop
- 13) Galley Overhead
- 14) Corian® Table w/Villa® Fabric Chairs
- 15) Villa® Fabric Sleeper Sofa
- 16) Villa® Fabric J-Love Seat
- 17) Villa® Leather 6-Way Power Driver/Passenger Seats
- 18) 20" Front TV
- 19) Overhead Storage

S T A N D A R D & O P T I O N A L F E A T U R E S

A U T O M O T I V E

- S Engine - Cummins® C.8.3 Liter, 350 hp ISC Diesel
- S Transmission - Allison® MD-3066, 6-Speed Automatic
- S Spartan® Mountain Master GT Chassis
- S Independent Front Suspension
- S Air Ride Suspension w/Bilstein® Shocks
- S Undercoating
- S Auxiliary Fog Lamps
- S Cast Aluminum Wheels (4)
- S Anti-Lock Braking System (ABS)
- S Full Air Brakes w/Automatic Slack Adjusters
- S Radial Tires
- S Tire Pressure Check Gauge
- S 3-Point Leveling Jacks
- S Oversized VDO Gauges
- S Nippondenso Climate Control System
- S Power Driver Window
- S Intermittent Wipers (Single Motor)
- S Villa® Leather 6-Way Power Driver/Passenger Seats
- O Villa® Leather 6-Way Power Driver/Passenger Seats w/Power Lumbar
- O Villa® Leather 6-Way Power Driver Seat & Passenger Buddy Seat w/Power Lumbar & Power Footrest
- S Sony® Rear Vision System with Audio
- S Sony® AM/FM Cassette
- S Sony® 10 Pack Disc Player
- S Front Mounted Chrome Heated Mirrors w/ Remote Adjustment
- S Windshield Tint Band
- S Battery Disconnects
- S Trailer Hitch 10,000 Lb. Capacity
- S Cruise Control
- S Air Horns
- S I.C.C. Light Switch
- S 2-Speed Dash Fans
- S Driver/Passenger Map Lights
- S Automotive Safety Dash (w/TV)
- S Corian® Drink Holder w/Logo
- S CB Radio Ready
- S PAC Brake
- S Auxiliary 12V Dash Receptacle

- S Electronic Battery Control Center
- S Tilt/Telescope Steering Wheel
- S Underhood Utility Light, Front & Rear
- S Tinted Acrylic Sun Visors
- S Driver Side Pull Down Shade
- S Sound Insulation in Subfloors, Front & Rear
- S Steel Surface on Front Bulkhead/Engine Frame
- S Pneumatic Pop-Up Stepwell Cover
- S Back Lighted Instrument Panel
- S Remote Auxiliary Start System
- S (4) 6V House Batteries - 217 Amp Auxiliary Batteries
- S (2) 12V Chassis Batteries - 2000 CCA
- O Hand-Held CB Radio
- O Manual Air Dump Override Switch
- O Bose Speakers
- O V.I.P. Delivery

S T R U C T U R A L

- S Stacked Rail Chassis Frame
- S Hand Laid Fiberglass Exterior Sidewalls
- S Steel Reinforced Vacubond Sidewall, Roof & Floor Construction
- S Steel Outriggers on Chassis
- S Heated Water & Holding Tank Compartments
- S Vacubond Insulated Storage Area

E X T E R I O R

- S 50' Air Service Line
- S Detachable 50 Amp Power Cord
- S Full Fiberglass Front & Rear Caps
- S Gelcoat Fiberglass
- S One-Piece Domed Fiberglass Roof
- S Polished Stainless Steel Bumpers - Front & Rear
- O Two-Piece Rear Ladder
- O Norcold® Freezer/Refrigerator
- S Polyethylene Battery Trays
- S Hydraulic Genset Slide-Out
- S Power Entry Single Step
- S 29" Wide Entry Door w/Deadbolt
- S Dual Holding Tank San-T-Flush System

- S Locking Exterior Storage Compartments
- S (4) Exterior Graphics
- O (4) "Eagle" Graphics
- S Dual Pane Windows
- S 20' Patio Awning
- S 5' & 12' Window Awnings
- S Awning Rail Molding RS/DS
- S Mud Flaps - Front & Rear
- S Protective Bra Cover w/Logo
- S Stainless Steel Kickplate Under Entry Door
- S Exterior Rinse Hose with Soap Dispenser & Paper Towel Holder
- S Deluxe Entry Handle
- S Luggage Compartment Lights
- S Docking Lights - 2 Each Front & Rear
- S Tank Level Monitor
- O Digital Satellite System w/Automatic Lift
- S Fiberglass Front Quarter Panels/Wheel Trims
- S Exterior Convenience Light at Dump Valves
- S Exterior Storage Doors w/Pantograph Hinges
- O Screen Door
- S Water Pump Switch
- S Long Handled Squeegee
- S Holding Tanks w/Low Point Drain Valves
- S One 54" Slide-Out Storage Tray
- O Additional 54" Slide-Out Storage Tray
- O 36" Slide-Out Storage Tray
- O Exterior Entertainment Center
- S Fresh Water Hose
- S Fresh Water Fill
- S Floor Mounted LPG Tank, 40.3 Gallon
- O 12' DS Awning

A P P L I A N C E S

- S Onan® 7.5 kw Quiet Diesel Generator
- S Dometic® 12V/LP Electric Side-By-Side Refrigerator w/Ice Maker (EVS, EDS)
- S Dometic® 12V/LP Electric Side-By-Side Refrigerator (ENS)
- S U-Line® Ice Maker (ENS Only)
- O Norcold® 12V/LP Electric 4-Door Refrigerator w/Ice Maker (EVS, EDS)

S T A N D A R D & O P T I O N A L F E A T U R E S

- O Norcold® 12V/LP Electric 4-Door Refrigerator (ENS)
- S Deluxe Range with Large Oven
- O Kitchen Aid® 2-Burner Recessed Cooktop
- S Microwave/Convection Oven with Built-in Range Hood with Light/Fan
- S Water Filter
- S 50 Amp 120 Volt Power Cord
- S Motorized Elevating 20" Sony® Trinitron Stereo Color TV (Front) with Remote
- S 20" Sony® Trinitron Stereo Color TV (Rear) with Remote
- S Sony® VHS - 4 Head Hi-Fi Stereo VCR
- S Heart Interface® - Source Manager 20 2000 Watt Continuous Inverter, 100 Amp Converter, Intelligent Transfer Switching
- O Heart Interface® - Source Manager 25 2500 Watt Continuous Inverter, 130 Amp Converter, Intelligent Transfer Switching
- S Multi-Point Water Pump Switching
- S Residential China Bowl Flush Toilet
- S D.S.I. 10 Gallon Water Heater LP/120V
- S LPG Leak Detector
- S 12 Volt Carbon Monoxide Detector
- S Smoke Detector
- S Fire Extinguisher
- S Solar Charging Panel
- S Dual Roof A/C - 13,500 BTU (Each)
- S Dual Furnaces with Thermostat & Auto Ignition - 35M BTU (Each)
- S Park Telephone Ready
- S Rigid Furnace Ducting System
- S Washer/Dryer (Vented)

G A L L E Y

- S Silverware Tray
- S Corian® Dinette Table with Extension & 4 Chairs
- S Corian® Galley Top & Sink Covers
- S Extra Large Double Bowl Galley Sink
- S Moen® One Touch Galley Faucet
- S Solid Wood Refrigerator Door Inserts
- S Wood Drawers with Dovetail Joints
- S Pantry w/Slide-Out Drawers and Adjustable Shelves (EVS Only)
- S Slide-Out Pantry w/Hamper (ENS Only)
- S Corian® Range Cover
- S 120V Outlet & Telephone Jack at Dinette
- S Large Galley Ceiling Light
- S Porcelain Tile Floor
- O Nuheat Heated Tile Floor
- O Booth Dinette with Corian® Table
- S Electric Galley Slide-Out

B A T H

- S Skylight in Tub/Shower
- S Brass & Chrome Bath Accessories
- S Corian® Lavy Top with Corian® Sink
- S Deluxe Medicine Cabinet
- S Deluxe Fiberglass Tub/Shower Enclosure (EVS, EDS)
- S Deluxe Fiberglass Shower w/Fold-Down Seat (ENS)
- O Deluxe Fiberglass Shower w/Fold-Down Seat (EVS, EDS)
- O Enlarged Water Closet w/Second Corian® Sink, Deluxe Fiberglass Shower w/Fold-Down Seat (EVS, EDS)
- S Porcelain Tile Floor (Diagonally Laid)
- O Nuheat Heated Tile Floor
- S Corian® Decorative Soap Dish
- S Glass/Brass Shower Doors
- O Shirt Wards with Drawers (ENS, EVS)
- O Full Wardrobe with Drawers (ENS, EVS)

B E D R O O M

- S Restonic® Reversible Pillowtop Mattress 60" x 80"
- O California King Bed 72" x 84" (EVS, ENS, N/A w/Wardrobe Slide-Out)
- S Key Locked Safe
- S Reversible Comforter with Pillow Shams/1 Bolster
- S Day/Night Pleated Shades
- S Two Decor Throw Pillows
- S Wallpaper w/Decorative Border
- S Solid Wood Raised Panel Bath/Bedroom Doors
- S Secondary Phone Jack
- S 120V/12V AC/DC Central Electrical Panel
- S Corian® Nightstand Tops
- S Electric Wardrobe Slide-Out (EDS)
- O Electric Wardrobe Slide-Out (EVS, ENS)

I N T E R I O R

- S 12V Halogen Task Lighting
- S Solid Wood Magazine Rack/Passenger
- S Micro Mini-Blinds
- S 12V Deluxe Lighting System
- S Rain Sensor Power Roof Vents w/3-Speed Fan
- S Entry Step Switch & Disconnects at Entry Wall

- S Link 1000 Battery Monitor
- S 72" Fabric Sleeper Sofa by Villa® (2) Drawers
- S 70" Fabric J-Love Seat by Villa® (2) Drawers
- S Solid Wood Framed Mirror Headboard
- S Two Decorative Sofa Pillows
- S Night Floor Lighting
- S TV Cable Ready
- S Deluxe Soft Acoustic Ceiling
- S Wall Mounted Black & Decker® Dustbuster
- S Custom Decors (4 Interiors)
- S Deluxe Wall-to-Wall Carpeting (Bedroom & Living Areas)
- O Villa® Leather Sleeper Sofa w/2 Drawers
- O Villa® Leather J-Love Seat w/2 Drawers
- O Villa® Leather Sleeper Sofa, Wraparound Dinette, J-Love Seat
- O Villa® Leather Recliner w/Corian® Inlay Desk/Sleeper Sofa
- O Villa® Leather Recliner w/Laptop Computer Desk/Sleeper Sofa
- S Lambrequin Window Treatments
- O Day/Night Pleated Shades (Living Room & Dinette)
- S Single Thermostat for Cooling & Heating
- S Alpine Oak, Walnut, Majestic Oak or Clear White Maple Cabinetry
- S TV Antenna with 2 Jacks Included
- S Non-Skid Cabinet Shelves
- S Front Windshield Privacy Curtain
- S Cedar-Lined Wardrobe
- S Wardrobe Light
- S Beveled Glass Mirrors
- S Solid Core Raised Panel Oak/Walnut/Maple Cabinet Doors
- S Deluxe Drawer Guides with Travel Locks